

# OFFICIAL SYLLABUS 2011



*Midland Y's Men's  
Club*

## 66th Music Festival

April 13th to May 26th



In Co-operation with the  
Music Teachers of Greater Huronia

For more information  
Email: [administrator@midlandmusicfestival.ca](mailto:administrator@midlandmusicfestival.ca)  
Phone: 705-549-5866

[www.midlandmusicfestival.ca](http://www.midlandmusicfestival.ca)

MIDLAND YOUNG MEN'S CHORUS



# 66th Music Festival

**April 13 to May 26, 2011**

Midland Y's Men's Music Festival and in  
Co-operation with the Music Teachers of Greater Huronia

## Official Schedule

April 13	Recorders/Orff École Saint-Louis 54 rue Dufferin, Penetanguishene	Tanya Bénard
April 18—20	French Vocal École Saint-Louis 54 rue Dufferin, Penetanguishene	Elise Bédard
April 26	Strings/Violins Alliance Church 829 Yonge Street, Midland	Aaron Solomon
April 28 & 29	Guitar Alliance Church 829 Yonge Street, Midland	Robert Tardik
May 2—5	Piano Alliance Church 829 Yonge Street, Midland	Stella terHart
May 6	School Vocals St. Paul's Church 308 King Street, Midland	Colleen Orr
May 9—13	English Vocal St. Paul's Church 308 King Street, Midland	Irene Ilic
May 16	Instrumentals Alliance Church 829 Yonge Street, Midland	Jeff Reynolds
May 16 (evening)	Bands TBA Midland	Jeff Reynolds



## Music Festival Special Events

May 26, 2011 7:00 PM	<b>"Festival of the Stars"</b> Concert & Awards St. Paul's Church 308 King Street, Midland	Midland Y's Men's Music Festival 338 King Street Midland, ON L4R 3M8
-------------------------	---	---

For more information call 527-8271 or visit us at  
[www.midlandmusicfestival.ca](http://www.midlandmusicfestival.ca)

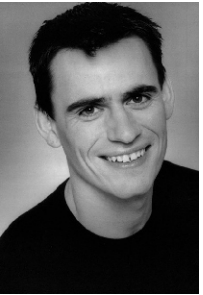


# 2012 Midland Y's Men's Music Festival



## **Fiddles/Strings - Karen Reed**

We're most pleased to welcome Karen Reed to our 2012 Midland Y's Men's Music Festival. An accomplished and acclaimed Canadian fiddle-player, Karen is proud of her Canadian roots and embraces fiddling as a significant part of her heritage. She is now extremely active as a full-time fiddle instructor and performer-entertainer, as well as a fiddle competition adjudicator. Karen is also Director of the Orangeville Fiddle and Step Dance Camp and is a freelance workshop and camp instructor. She has recently released a new CD, *Living in His Shadow*. Her deep commitment to the fiddling 'sub-culture' is Karen's way of supporting the tradition of fiddling at every level in Canada. It's her desire that the genre should never lose its soul and all that is authentic in its traditions be preserved.



## **Elementary Schools Vocal - Douglas Millar**

We extend a cordial welcome to Douglas Millar as our Elementary Schools Vocal adjudicator at the 67th Midland Y's Men's Music Festival. As a bass-baritone, Douglas has performed to great acclaim here in Canada and abroad in a wide, multi-lingual repertoire encompassing opera, musical theatre and the choral masterpieces spanning four centuries. In addition to his solo appearances, Douglas is also a member of the Westminster Choir and has performed frequently at the Lincoln Center in New York City, as well as at Carnegie Hall and with the Canadian Opera Company Chorus. With a strong commitment to arts education, he has devoted considerable time to teaching voice, conducting choirs and leading vocal workshops in Canada and the USA. A native of P.E.I., now based primarily in Toronto, Douglas is Music Director of Don Mills United Church and takes particular pleasure in adjudicating young singers at community music festivals.



## **Guitar - Geoff Hlibka**

We're delighted to welcome Geoff Hlibka to adjudicate our Guitar classes this year. A multi-faceted, Toronto-based guitarist, Geoff is versatile in a number of styles, having started briefly as an 8-year-old with the ukulele, then graduating to organ. Aged 12, inspired by a friend, he began violin instruction and then, three years later, discovered his true, future vocation as a guitarist. Geoff enrolled in Humber College's acclaimed music programme. Then, after finishing college, he formed his band, Mystic Fools, and recorded his first, full-length CD. The band went on to open for some of Canada's legendary bands including April Wine, Blue Rodeo and Kim Mitchell. Geoff has since gone on to play and tour with many groups across Canada, the USA, the Caribbean and Africa. A busy recording artist, his guitar and bass playing can be heard on a wide range of commercial recordings in styles as diverse as Latin, dance, pop, rock, rap, exercise and children's music, CD sales of which extend beyond a million copies, as well as featuring on TV stations CTV and TSN. Geoff is taking time out to adjudicate our students from performing and touring with the award-winning and Billboard-charting guitarist, Johannes Linstead.



## **Bands & Instrumental - Stella terHart**

We extend a warm welcome to Stella terHart on her return engagement in Midland for the 2012 Midland Y's Men's Music Festival. A native of Estevan, Saskatchewan and a direct descendent of the violinist and composer, Tomaso Vitali, Stella is currently the only individual in Canada to hold all four degrees from the U of T Conservatory of Music in Teaching, Performance, Composition and Theory. Stella greatly enjoys adjudicating at festivals and has pursued engagements in Ontario and throughout Canada, in addition to teaching classroom music to Grades 6-12, directing Junior and Senior bands, jazz ensembles and choirs and accompanying operatic productions and classical vocal performances by noted singers. As a busy composer, teacher, musician and member of the International Association of Women Composers (IAWC), Ms. terHart has gained numerous distinctions. Her works have been recorded and published in the US and Canada, among others by The Frederick Harris Music Co., and performed regularly on CBC Radio.



## Vocale Française - Elisabeth Pomès

C'est avec grand plaisir que nous souhaitons la bienvenue à Elisabeth qui est de retour au Festival de musique du Club de Midland Y's Men pour 2012. En 1993, elle a remporté le premier prix lors de la compétition vocale Eckhardt-Gramatté ainsi que le premier prix de la compétition du Festival de musique de Aspen. Elisabeth Pomès possède une maîtrise en Art et Littérature de l'Université de Paris et une maîtrise en Performance vocale de l'Université de Toronto. Elle est membre de la faculté vocale du Conservatoire royal de musique depuis 1990, de l'école Glen Gould Professional School et du College of Examiners. Elisabeth maintient un horaire chargé des deux côtés de l'Atlantique avec ses spectacles, enregistrements et engagements comme juge, avec CJRT et la CBC. Elle a enregistré deux disques compacts par acclamation (*From Paris to Broadway* en 2005 et *Tapestry of the Heart* en 2000). Sa vocation première est le chant, mais Elisabeth Pomès considère sa carrière d'enseignante à la fois un privilège et un devoir professionnel. Par ailleurs, elle est enseignante certifiée de Yoga. Elle donne des ateliers sur la gestion du stress et de la douleur et elle incorpore ses techniques à l'enseignement pour aider à transformer la nervosité en énergie positive pendant la performance sur scène.



## Piano - Mary Ficzer

We extend a warm welcome to Mary Ficzer on her return to Midland for the 2012 Y's Men's Music Festival. Mary holds an Honours Bachelor of Music degree in Piano Performance as well as a Master's degree in Chamber Music and Accompanying, both from the University of Western Ontario. In addition, she holds her A.R.C.T. in Performance from the Royal Conservatory in Toronto. Greatly in demand as an accompanist for instrumentalists and vocalists in the GTA, Ms. Ficzer has toured internationally, in addition to maintaining a full studio at the Merriam School of Music, where she is currently Director of Examinations, teaching both group and private piano lessons. Mary is also the Department Head for the School's Enriched Studies programme which helps young performers to explore their musical potential. A dedicated teacher, she enjoys providing students with the tools to develop their skills and knowledge in the style of music they choose, ranging from classical to jazz and pop.



## English Vocal – Barbara Young

We're very happy to welcome Barbara Young to the 67th Midland Y's Men's Music Festival. An Honours graduate in Music from the University of Western Ontario, with postgraduate work in England, Barbara's involvement in musical theatre and drama spans over 30 years as director, performer and teacher. In addition to appointments, among others, at the Arts Club in Vancouver, the Confederation Theatre in Charlottetown, The Banff Centre and the Huron County Playhouse, where she earned a Thea Award for Musical Direction, Barbara has completed 15 seasons with the Stratford Shakespeare Festival as Musical Consultant and composer/arranger of the productions, *To Kill a Mocking Bird* and *Henry V*. She is also active as Teaching Artist at the Shakespeare School and Shakespeare on Wheels. Barbara's adjudication work includes engagements at the Toronto International Music Festival, Ovation Music Festivals, the Ontario and Alberta Provincial Finals, as well as at many local music festivals.



## Orff/Recorder - Kim Kendrick

We are very pleased to welcome Kim Kendrick to our 2012 Midland Y's Men's Music Festival. Kim is a music educator with more than thirty years experience teaching people of all ages both in the classroom and privately (voice and piano). She earned her specialist certification in both Kodaly and Orff-Schulwerk at the Royal Conservatory School in Toronto. She has also completed five post-Level Three Orff intensive programmes with Doug Goodkin, Steve Calantropio and, most recently, Jo Ella Hug. Kim is a frequent workshop presenter herself, having given workshops for the TDSB, ECMA and the Anglican Dioceses of Toronto. She has also provided teacher training for the Education Department of the Toronto Symphony Orchestra. She is the founder and director of the St. Mary Magdalene Orff Ensemble. Kim is currently on the Faculty of the Royal Conservatory School where she teaches in the Children's Programmes and Teacher Training departments. She is a team teacher in the school's Orff-Schulwerk Levels programme, teaching the Recorder and Vocal components. She is also a Vocal and Orff itinerant teacher for the Toronto District School Board.

# MIDLAND Y'S MEN'S MUSIC FESTIVAL

[www.midlandmusicfestival.ca](http://www.midlandmusicfestival.ca)

e-mail: [administrator@midlandmusicfestival.ca](mailto:administrator@midlandmusicfestival.ca)

**Mission Statement:** The Midland Y's Men's Music Festival encourages the study and advancement of music from the Renaissance to the 21<sup>st</sup> Century, while providing youth of all ages and backgrounds an opportunity to perform, to be adjudicated by music professionals and to be rewarded.

**Philosophy:** The goals of the Y's Men's Music Festival are to:

- provide students motivation to develop a high level of performance;
- provide students opportunity to hear other students perform, thus stimulating their desire for growth;
- provide students opportunity to compare their own standard of achievement with those of other students;
- provide students an environment where the quality of material performed is stressed;
- provide students an event in which they can receive objective and constructive criticisms of their performance;
- provide music teachers with a setting in which they may appraise their own standard of accomplishment; and
- to provide the community with a source of enjoyment for both performers and listeners.

## **RULES AND REGULATIONS**

In pursuit of its mission, the Midland Y's Men's Music Festival (the "Music Festival") is continually evolving. As a result, please note any possible changes in the syllabus. We are grateful for the active support and interest of all musicians and music-loving people in the area and for making the annual Music Festival a success.

### **Working Management**

The Music Festival shall be under the working management of the Music Festival Committee. The Music Festival Committee is appointed each year by the Midland Y's Men's Club.

The Music Festival Committee has and will continue to refine the syllabus in consultation with teachers, musicians, adjudicators and festival organizers striving for an objective focus. Requests for additions, deletions or adjustments to the syllabus must be made in writing and forwarded to the Music Festival Committee for consideration by June 30<sup>th</sup> following the current year Music Festival.

Contributions to trophies, scholarships and the Music Festival Patron program are encouraged and appreciated. The Music Festival Committee must approve such initiatives prior to any commitment made on behalf of the donor to the Midland Music Festival.

Any matter not dealt with in the Rules and Regulations will be referred to the Music Festival Committee whose decision will be final.

Rules and Regulations of the Midland Music Festival are based upon the goals and expectations of the Royal Conservatory of Music ("RCM") and Conservatory Canada ("CC").

### **Music Festival Patron**

2.1 The Midland Music Festival in co-operation with Huronia Communities Foundation is now able to issue tax receipts for donations. Your donation is made directly to the HCF with instructions to Midland Music Festival. For most donors this means that the net cost of \$165 donations is now less than \$100, \$200 would cost less than \$120 after tax. Donations can be made directly online via HCF web. [www.huroniacommunities.com](http://www.huroniacommunities.com) or mail your donation to Midland Y's Men's Music Festival and receipts will be issued accordingly. For more detail on becoming a Patron contact Festival Director, Tim Dunlop at 705-528-0863 or email the Festival.

### **Definition of Eligibility**

- 3.1 All classes shall be open to amateurs only. For the purpose of these entries, an amateur shall be defined as one whose principal means of livelihood is not obtained from the profession or practice of music.
- 3.2 Classes marked "Open" are open to all aged participants within the guidelines noted for the section or the class.
- 3.3 Piano categories are as per RCM or equivalent grade level. Vocal categories are as per age unless otherwise indicated.  
Guitar categories are as follows (unless otherwise indicated): Junior – 12 & under, Intermediate – 15 & under, Senior – 18 & under. In all other disciplines the categories are as follows: Junior – 9 to 11, Intermediate 12 to 15 and Senior 16 to 18.
- 3.4 In all classes in which an age limit is set, performers must be within the prescribed age on the first day of January of the current Music Festival year. Participants must give date of birth on the Participant's entry form.

### **Copyright and Photocopying**

- 4.1 Photocopying of copyright music for the purpose of performance is illegal. No photocopies, computer-generated copies or copy derived from computer programs will be allowed in the Music Festival in any case whatsoever. Evidence of legal authorization by the publisher is the exception.
- 4.2 The Music Festival Committee reserves the right to disqualify any participant presenting a photocopy, computer-generated copy or copy derived from computer programs. Please note that this requirement also applies to accompanists.
- 4.3 Accompanists may use photocopies to facilitate page turns, but an original copy of the music must be placed face up on the piano during the performance.

- 4.3.1 These rules follow the standards as set out by the Ontario Music Festival Association of which the Music Festival is a member (see rule 6.1 in OMFA's syllabus at [www.omfa.info](http://www.omfa.info)).

## **Music**

- 5.1 A musical composition is a piece of music designed by its creator for repeated performance (as opposed to strictly improvisational music, in which each performance is unique). The music may be preserved in memory (i.e. Folk Songs passed on through tradition) or through a written system of notation using the musical elements melody, harmony, time, rhythm and dynamics. Original Compositions are written songs performed by human voice(s) as well as pieces written in various forms for other musical instruments.
- 5.2 In all "Own Choice" classes, participants must provide a copy of the music selected for the use of the Adjudicator. Such music must be delivered to the presiding secretary immediately preceding the respective discipline presentation. *Please note that both the accompanist's copy and the Adjudicator's copy must be original copies of the music* (4.2 above). Failure to comply with this rule will result in a non-competitive performance.
- 5.3 Music must be recovered from the presiding secretary by the Participant immediately following the respective discipline presentation.
- 5.4 Transpositions will be allowed in all vocal classes. All transpositions must be in the hands of the accompanist one month prior to the first day of the Music Festival.
- 5.5 The music of Foreign Language Classes in the vocal discipline must be in a language other than Canada's official languages.
- 5.6 All solo pieces must be performed from memory unless otherwise specified. Failure to do so will result in a loss of 5 marks and the performance will not be eligible for a prize. Duets, trios, ensembles, improvisation, quick studies, studies, original compositions and solo instrumental presentations are the exception.
- 5.7 If a participant enters a piece in a class that the adjudicator considers inappropriate, the adjudicator may offer adjudication only and no mark.
- 5.8 Accompanists playing for schools are paid by the Festival @ \$16.00 per hour.

## **Entries**

- 6.1 Copies of the syllabus may be obtained from:  
The Midland Music Festival website at: [www.midlandmusicfestival.ca](http://www.midlandmusicfestival.ca)  
Johnstone's Musicland, Midland
- 6.2 Entry forms should be carefully completed online at [www.midlandmusicfestival.ca](http://www.midlandmusicfestival.ca) by the deadline date of January 29th in the current festival year. Follow each page until you receive a registration number until then you are not registered. Late entries will not be accepted.
- 6.3 An entry will not be considered as being received until fees have been received.
- 6.4 It is the responsibility of the Participant and Teachers to read all rules and regulations and enter the correct class by CLASS NUMBER.
- 6.4.1 Entry fees cannot be refunded except when the entry is rejected by the Festival Committee. The Festival Committee reserves the right to reject any entry for any reason at its discretion.

## **Programme Procedure**

- 7.1 Classes with a single entry may perform and be adjudicated at the same time as another class, but will be evaluated as a distinct class.
- 7.2 Performers must not commence their presentation until the adjudicator gives a signal.
- 7.3 No participant, teacher or member of the public may speak to the Adjudicator. This may result in disqualification. Necessary questions from anyone must be directed to the Adjudicator's secretary or Venue Coordinator.
- 7.4 The marks awarded by the Adjudicator are final. Marks belong to the Participant and will not be announced or be available to teachers, other parents or other participants. The Music Festival emphasis is on the adjudication, not the competition.
- 7.5 The Festival Committee cannot guarantee that the class times that have been assigned to participants can be changed to accommodate conflicts.
- 7.6 Recording of a Participant's performance will be allowed. HOWEVER, absolutely NO recording of the

- adjudicator's remarks or flash photography during performances will be allowed.
- 7.7 Participants are asked to be prepared to announce their name, and the title and composer of their selected pieces.
  - 7.8 Participants should be prepared to perform 15 minutes prior to their assigned time.
  - 7.9 Maximum Class sizes will be 6. If more than 6 participate in a class, the class will be split, example 8 participants would split into 2 classes with 4 participants in each class.
  - 7.9.1 The Festival Committee reserve the right to combine age categories if registration numbers are insufficient to warrant separate age categories.

### **Accompanist**

- 8.0 The official accompanist will be available for chosen pieces in Elementary School vocal classes. Warm-up music must be in the hands of the official accompanist one month prior to the Music Festival, for information regarding this please contact Anne Wilkes at 527-0480.
- 8.1 If required for classes other than Elementary School Vocal, the Participant may pay a fee, agreeable to both soloist and accompanist, to the accompanist.
- 8.2 A tape-recorded accompaniment must be piano/instrumental only, no background vocals. If a taped accompaniment is used, the Participant is required to provide own tape playback equipment.

### **Admission**

- 9.1 The Midland Music Festival is open to the public upon payment of the price of admission. There will be an "all-inclusive" Season Pass to all Music Festival classes. The Season Pass does not include entry to the "Festival of the Stars". Performers, accompanists and participating teachers will be admitted free of charge.

### **Awards, Trophies, Scholarships**

- 10.1 To receive an Award of Excellence, the Participant's adjudicated mark must be 85 or higher.
- 10.2 To receive an Award of Proficiency, the Participant's adjudicated mark must be 80 to 84.
- 10.3 To receive an Award of Achievement, the Participant's adjudicated mark must be 75 to 79.
- 10.4 All other participants will receive an Award of Participation.
- 10.5 Participants qualifying for any of the Outstanding Solo Junior, Intermediate or Senior Awards must perform and place in at least three solo classes, two of which must be from the Royal Conservatory of Music or Canadian Conservatory Syllabi (except in non-conservatory disciplines).
- 10.6 An adjudication sheet with a written mark, medals and/or certificates for Excellence, Proficiency, Achievement and Participation will be presented to individuals in each group orally adjudicated. A medal will be awarded by the Adjudicator to the highest marked competitor in each class. A trophy will be awarded to all groups of 5 or more. A first place status will be awarded to the group with the highest mark in each class.
- 10.7 Where warranted by the adjudicator's assessment, awards will be presented to a broad base of participants.
- 10.8 All pieces must be at the competitor's current level of study or above. (Level of study is determined by the grade level of the majority of pieces played and/or by the last conservatory exam taken) Any piece played below the current level of study will not be included in the average for Awards. It is strongly recommended that each participant will perform at their current level or above, opposed to a lower level already completed. Competitors must elect which class to enter, subject to grade limits, and shall not be eligible to compete in another class in the same section, but may enter classes of a different type. For example, a competitor may enter Gr. 4 Solo-Conservatory and Gr. 5 Solo-Conservatory List A, but may not enter Gr. 4 Solo-Conservatory and Gr. 5 Solo-Conservatory.)
- 10.9 Placement marks will be averaged and are subject to the adjudicator's reflections in determining awards. The adjudicator's decision is final.
- 10.10 Funds for scholarships and awards are raised within our community and the Midland Music Festival is grateful for the local support of our area. Accordingly, all scholarships will, in return, be awarded to the residents of our community.

### **Final Concert**

- 11.1.1 The Music Festival will culminate each season with the "Festival of the Stars" Awards and Concert Evening. If selected as a winner of an award, the winner should be available to perform or to receive

their award. The Festival Committee reserves the right to select performers and repertoire for the Festival of the Stars Concert. These selections will be based on adjudicator's recommendations. Performers selected to play at the Festival of the Stars will be notified by phone and/or email. First place standing in a class does not ensure that a participant will be chosen to play at the Festival of the Stars. Trophies and scholarships will be award at the Festival of the Stars.

### **Complaints and Protests**

- 12.1 Neither Participants, Teachers nor others are permitted to enter into any discussions or correspondence with the Adjudicators before, during or after the Festival is over.
- 12.2 Complaints and protests must be made directly to the Administrative Assistant in writing to 338 King Street, Midland, ON L4R 3M8 within 24 hours of the conclusion of the protested class, and must be accompanied by a fee equivalent to the entry fee of the class protested. If a protest is sustained, the fee will be refunded. Such complaints and protest are not to be discussed with the adjudicator.

Revised September 2010

### **DISCIPLINE CONTACT LIST**

For information regarding music content, please contact:

English Vocal Schools	Anne Wilkes	527-0480
English Vocal Privately Tutored		
Section Vocale Francaise	Germaine Lesperance	549-3677
Piano	Jane Maurice	526-3535
Guitar & Original Composition	Brent Robitaille	549-2377
Instrumental	Blake Smith	549-5866
Recorder	Germaine Lesperance	549-3677
Strings & Fiddles	Cindy Thompson	549-4236

# Midland Music Festival - Syllabus 2011

## PIANO

For students not studying Conservatory courses, please see the RCM/CC piano syllabi at Johnstone's Musicland, 280 King Street, Midland – (705) 526-7821 to select and order music.

Inquiries: Please call the Festival Piano Music Advisor – Jane Maurice at 526-3535

### SOLO BEGINNER - PRIMER

- Any recognized teaching method is acceptable.
- All classes are "Own Choice" - provide original music for the Adjudicator.
- Participants may only enter one class in this section.

P-2000	7 yrs & under	\$10.00
P-2001	9 yrs & under	\$10.00
P-2002	11 yrs & under	\$10.00

### SOLO BEGINNER - LEVEL 1

- See previous description

P-2003	7 yrs & under	\$10.00
P-2004	9 yrs & under	\$10.00
P-2005	11 yrs & under	\$10.00

### SOLO BEGINNER - LEVEL 2

See previous description

P-2006	7 yrs & under	\$10.00
P-2007	9 yrs & under	\$10.00
P-2008	11 yrs & under	\$10.00

### SOLO BEGINNER - LEVEL 3

|See previous description

P-2009	7 yrs & under	\$10.00
P-2010	9 yrs & under	\$10.00
P-2011	11 yrs & under	\$10.00

### SOLO BEGINNER - LEVEL 4

|See previous description

P-2012	7 yrs & under	\$10.00
P-2013	9 yrs & under	\$10.00
P-2014	11 yrs & under	\$10.00

### SOLO OLDER BEGINNER - 12 YRS & UP

- See previous description.

P-2015	Primer Level	\$10.00
P-2016	Level 1	\$10.00
P-2017	Level 2	\$10.00
P-2018	Level 3	\$10.00
P-2019	Level 4	\$10.00

### SOLO ADULT STUDENT - 19 YRS & UP

- Amateur only - music is "Own Choice" - from current RCM/CC syllabi
- Memorization not required

P-2114	19 yrs and older - grade 2 or below	\$10.00
P-2115	19 yrs and older - grade 3 & 4	\$10.00
P-2116	19 yrs and older-grade 5-9	\$10.00

### SOLO-CONSERVATORY

- "Own Choice"
- Piece must be chosen from any list of the current RCM/CC syllabi excluding Popular selection list, but must not be played in any other section in the Festival. |Students registered in this section may not register in any other Conservatory category.

P-2328	Introductory Grade	\$10.00
P-2329	Grade 1	\$10.00
P-2330	Grade 2	\$10.00
P-2331	Grade 3	\$10.00
P-2332	Grade 4	\$10.00
P-2333	Grade 5	\$10.00
P-2334	Grade 6	\$10.00
P-2335	Grade 7	\$10.00
P-2336	Grade 8	\$10.00
P-2337	Grade 9	\$10.00
P-2338	Grade 10	\$10.00
P-2339	Associate	\$10.00

### SOLO-STUDY

- "Own Choice"
- Students may enter any number of classes in this section at their present level or study or above
- Studies must be chosen from current RCM/CC syllabi.
- Memorization is not required

P-2217	Grade 1	\$10.00
P-2218	Grade 2	\$10.00
P-2219	Grade 3	\$10.00
P-2220	Grade 4	\$10.00
P-2221	Grade 5	\$10.00
P-2222	Grade 6	\$10.00
P-2223	Grade 7	\$10.00
P-2224	Grade 8	\$10.00
P-2225	Grade 9	\$10.00
P-2226	Grade 10	\$10.00
P-2227	Associate - Concert Etude	\$10.00

# Midland Music Festival - Syllabus 2011

## PIANO

### SOLO-CONSERVATORY LIST A

- "Own Choice"
- Piece must be chosen from List A of current RCM/CC syllabi.

P-2340	Grade 1	\$10.00
P-2341	Grade 2	\$10.00
P-2342	Grade 3	\$10.00
P-2343	Grade 4	\$10.00
P-2344	Grade 5	\$10.00
P-2345	Grade 6	\$10.00
P-2346	Grade 7	\$10.00
P-2347	Grade 8	\$10.00
P-2348	Grade 9	\$10.00
P-2349	Grade 10	\$10.00
P-2350	Associate	\$10.00

### SOLO-CONSERVATORY LIST B

- "Own Choice"
- Piece must be chosen from List B of current RCM/CC syllabi.

P-2351	Grade 1	\$10.00
P-2352	Grade 2	\$10.00
P-2353	Grade 3	\$10.00
P-2354	Grade 4	\$10.00
P-2355	Grade 5	\$10.00
P-2356	Grade 6	\$10.00
P-2357	Grade 7	\$10.00
P-2358	Grade 8	\$10.00
P-2359	Grade 9	\$10.00
P-2360	Grade 10	\$10.00
P-2361	Associate	\$10.00

### SOLO-CONSERVATORY LIST C

- "Own Choice"
- Piece must be chosen from List C of current RCM/CC syllabi.

P-2362	Grade 1	\$10.00
P-2363	Grade 2	\$10.00
P-2364	Grade 3	\$10.00
P-2365	Grade 4	\$10.00
P-2366	Grade 5	\$10.00
P-2367	Grade 6	\$10.00
P-2368	Grade 7	\$10.00
P-2369	Grade 8	\$10.00
P-2370	Grade 9	\$10.00
P-2371	Grade 10	\$10.00

### SOLO-CONSERVATORY LIST C

- "Own Choice"
- Piece must be chosen from List C of current RCM/CC syllabi.

P-2372	Associate	\$10.00
--------	-----------	---------

### SOLO-CONSERVATORY LIST D

- "Own Choice"
- Piece must be chosen from List D of current RCM/CC syllabi.

P-2373	Grade 7 (CC syllabus only)	\$10.00
P-2374	Grade 8	\$10.00
P-2375	Grade 9	\$10.00
P-2376	Grade 10	\$10.00
P-2377	Associate	\$10.00

### SOLO-CONSERVATORY LIST E

- "Own Choice"
- Piece must be chosen from List E of current RCM/CC syllabi.

P-2378	Grade 10	\$10.00
P-2379	Associate	\$10.00

### SOLO - ROYAL CONSERVATORY POPULAR SLECTION

- "Own Choice"
- Piece must be chosen from Popular list of current RCM syllabus

P-2380	Grade 3	\$10.00
P-2381	Grade 4	\$10.00
P-2382	Grade 5	\$10.00
P-2383	Grade 6	\$10.00
P-2384	Grade 7	\$10.00
P-2385	Grade 8	\$10.00
P-2386	Grade 9	\$10.00
P-2387	Grade 10	\$10.00

### SOLO - CONTEMPORARY

- "Own choice".
- Must not include Pop, Rock, Jazz, Sacred or RCM Popular Selections entries.
- Piece must be chosen from the current RCM/CC syllabi or the Canadian Contemporary Showcase Syllabus, issued by the Alliance for Canadian New Music Projects at the appropriate grade level or higher.

P-2488	Introductory Grade	\$10.00
P-2489	Grade 1	\$10.00
P-2490	Grade 2	\$10.00
P-2491	Grade 3	\$10.00
P-2492	Grade 4	\$10.00
P-2493	Grade 5	\$10.00
P-2494	Grade 6	\$10.00
P-2495	Grade 7	\$10.00

# Midland Music Festival - Syllabus 2011

## PIANO

### SOLO - CONTEMPORARY

- "Own choice".
- Must not include Pop, Rock, Jazz, Sacred or RCM Popular Selections entries.
- Piece must be chosen from the current RCM/CC syllabi or the Canadian Contemporary Showcase Syllabus, issued by the Alliance for Canadian New Music Projects at the appropriate grade level or higher.

P-2496	Grade 8	\$10.00
P-2497	Grade 9	\$10.00
P-2498	Grade 10	\$10.00
P-2499	Associate	\$10.00

### SOLO-CONTEMPORARY COMPOSERS

- "Own Choice"
- Piece must be written by any composer from 20th or 21st century excluding Canadian composers.
- Piece does NOT need to be chosen from the current RCM/CC syllabi.

P-2500	8 yrs & under	\$10.00
P-2501	10 yrs & under	\$10.00
P-2502	12 yrs & under	\$10.00
P-2503	14 yrs & under	\$10.00
P-2504	16 yrs & under	\$10.00
P-2505	18 yrs & under	\$10.00
P-2506	Open	\$10.00

### SOLO - POP OR ROCK

- "Own Choice" - not required from RCM/CC syllabi.

P-2607	8 yrs & under	\$10.00
P-2608	10 yrs & under	\$10.00
P-2609	12 yrs & under	\$10.00
P-2610	14 yrs & under	\$10.00
P-2612	16 yrs & under	\$10.00
P-2613	18 yrs & under	\$10.00
P-2620	Open	\$10.00

### SOLO - JAZZ, BLUES and RAGTIME

- "Own Choice" - not required from RCM/CC syllabi.

P-2614	8 yrs & under	\$10.00
P-2615	10 yrs & under	\$10.00
P-2616	12 yrs & under	\$10.00
P-2617	14 yrs & under	\$10.00
P-2618	16 yrs & under	\$10.00
P-2619	18 yrs & under	\$10.00

### SOLO-SACRED WORKS

- "Own Choice" - not required from RCM/CC syllabi.

P-2621	8 yrs & under	\$10.00
P-2622	10 yrs & under	\$10.00
P-2623	12 yrs & under	\$10.00
P-2624	14 yrs & under	\$10.00
P-2625	16 yrs & under	\$10.00
P-2626	18 yrs & under	\$10.00
P-2627	Open	\$10.00

### SOLO - QUICK STUDY

- The selection given to each student will be one Conservatory grade level below the current level of study. Please enter class at the current level of study.
- The music will be selected by the adjudicator.
- The selection will be available for pickup no less than 48 hours before performance time. It is the responsibility of each participant to pick up music from designated location of the piano classes.
- Memorization is not required.
- Musicianship, accuracy, and attention to detail will be closely watched by the Adjudicator.

P-2628	Grade 1	\$10.00
P-2629	Grade 2	\$10.00
P-2630	Grade 3	\$10.00
P-2631	Grade 4	\$10.00
P-2632	Grade 5	\$10.00
P-2633	Grade 6	\$10.00
P-2634	Grade 7	\$10.00
P-2635	Grade 8	\$10.00
P-2636	Grade 9	\$10.00
P-2637	Grade 10	\$10.00
P-2638	Associate	\$10.00

### SIGHT READING

- Each participant will be given a short amount of time at the piano to examine the music provided by the adjudicator.
- Participants will wait outside until their performance time.
- Level of difficulty is equivalent to that of the RCM/CC sign reading requirements for each grade level indicated. (Grade 4 & under 1 min prep time & Grade 5 & over 2 min prep time.

P-2639	Grade 1	\$10.00
P-2640	Grade 2	\$10.00
P-2641	Grade 3	\$10.00
P-2642	Grade 4	\$10.00
P-2643	Grade 5	\$10.00
P-2644	Grade 6	\$10.00
P-2645	Grade 7	\$10.00

# Midland Music Festival - Syllabus 2011

## PIANO

### SIGHT READING

- Each participant will be given a short amount of time at the piano to examine the music provided by the adjudicator.
- Participants will wait outside until their performance time.
- Level of difficulty is equivalent to that of the RCM/CC sign reading requirements for each grade level indicated. |Grade 4 & under 1 min prep time & Grade 5 & over 2 min prep time.

P-2646	Grade 8	\$10.00
P-2647	Grade 9	\$10.00
P-2648	Grade 10	\$10.00
P-2649	Associate	\$10.00

### SOLO-IMPROVISATION

- Each participant in Grade 5 level or below will improvise on a minimum 4 bar theme of their choice.
- Each participant in Grade 6 level or above will improvise on a minimum 8 bar theme of their choice.
- The theme can either be the participant's own theme or a 'borrowed' theme.
- Originality, musical inventiveness, and structural unity will be the basis for adjudication.
- A maximum time limit of 5 minutes will be enforced.
- Participants must hand in a copy of the basic theme to the secretary at the beginning of the class.

P-2650	Grade 1	\$10.00
P-2651	Grade 2	\$10.00
P-2652	Grade 3	\$10.00
P-2653	Grade 4	\$10.00
P-2654	Grade 5	\$10.00
P-2655	Grade 6	\$10.00
P-2656	Grade 7	\$10.00
P-2657	Grade 8	\$10.00
P-2658	Grade 9	\$10.00
P-2659	Grade 10	\$10.00
P-2660	Associate	\$10.00

### DUET (ONE PIANO - FOUR HANDS)

- Each participating ensemble is to perform an "Own Choice" piece.
- Memorization is not required.
- No performer may play twice in the same class.

P-2700	8 yrs & under	\$15.00
P-2701	10 yrs & under	\$15.00
P-2702	12 yrs & under	\$15.00
P-2703	14 yrs & under	\$15.00
P-2704	16 yrs & under	\$15.00
P-2705	18 yrs & under	\$15.00
P-2706	Open	\$15.00

### PIANO TRIO (ONE PIANO - SIX HANDS)

- Each participating ensemble is to perform as "Own Choice" piece.
- Memorization is not required.
- No performer may play twice in the same class.

P-2800	8 yrs & under	\$20.00
P-2801	10 yrs & under	\$20.00
P-2802	12 yrs & under	\$20.00
P-2803	14 yrs & under	\$20.00
P-2804	16 yrs & under	\$20.00
P-2805	18 yrs & under	\$20.00
P-2806	Open	\$20.00

### FAMILY DUET OR TRIO

- Each duet or trio must include one adult family member or guardian.
- Any combination of age levels is acceptable.
- Each participating ensemble is to perform an "Own Choice".
- Memorization is not required.

P-2900	Pre-grade 1/Grade 1	\$15.00
P-2901	Grades 2,3	\$15.00
P-2902	Grades 4,5	\$15.00
P-2903	Grade 6,7	\$15.00
P-2904	Grades 8-9	\$15.00
P-2905	Grades 10-Associate	\$15.00

# Midland Music Festival - Syllabus 2011

## ENGLISH VOCAL

For Elementary School Vocal Classes: Students entering Elementary School Vocal Solos, may NOT enter Private Tutored Vocal Classes.  
 Privately Tutored Vocal Classes: may NOT enter Elementary School Solos .  
 An official accompanist is available for Elementary School classes only.  
 Participants in other classes must arrange for their own accompanist.  
 Props may be used for Musical Theatre classes ONLY.

Inquiries:  
 Please call the Festival School Vocal Music advisor, Anne Wilkes at 527-0480

### RHYTHM BAND

| Music is "Own Choice"  
 | Provide original music to the Adjudicator. |Adjudication only

EV-6000	Kindergarten	\$15.00
EV-6001	Grade 1	\$15.00

### ELEMENTARY SCHOOL VOCAL SOLO

EV-6010	Jr. Knd. Boys <i>The Circus, HRS, page 12</i>	\$10.00
EV-6011	Jr. Knd. Girls <i>The Proper Kitten, HRS, page 53</i>	\$10.00
EV-6012	Sr. Kind. Boys <i>Sing A Song of Sixpence, HRS, page 13</i>	\$10.00
EV-6013	Sr. Kind. Girls <i>Sing A Song of Sixpence, HRS, page 13</i>	\$10.00
EV-6014	Gr.1 boys <i>Carpenter, Carpenter (2 vs), HRS, page 52</i>	\$10.00
EV-6015	Gr.1 girls <i>Good Morning Merry Sunshine (2 vs), Arthur Edward Johnstone, HRS, page 65</i>	\$10.00
EV-6016	Gr.2 boys <i>Bird Songs (2 vs), HRS, page 107</i>	\$10.00
EV-6017	Gr.2 girls <i>The Robin's Song (2 vs), HRS, page 47</i>	\$10.00
EV-6018	Gr.3 boys <i>A Cookie for Snip,   Burton Kurth, Lelie 1049</i>	\$10.00
EV-6019	Gr.3 girls <i>On Tiptoe, HRS, page 162</i>	\$10.00
EV-6020	Gr.4 boys <i>There Once Was A Puffin, CCC1, page 33</i>	\$10.00
EV-6021	Gr.4 girls <i>Summer Lullaby, Camilla During, CCC1, page 18</i>	\$10.00
EV-6022	Gr.5 boys <i>Grandfather Clock, CCC1, page 22</i>	\$10.00
EV-6023	Gr.5 girls <i>Blossom Snow, Burton Kurth, CCC2, page 38</i>	\$10.00
EV-6024	Gr.6 boys <i>A Pirate Song, RCM, page 52</i>	\$10.00
EV-6025	Gr.6 girls <i>Spring Is Singing, Anderson, Leslie 1125</i>	\$10.00
EV-6026	Gr.7&8 boys (unchanged) <i>Something to Sing About (2 vs), Oscar Brand, Songtime 7 page 2</i>	\$10.00

### ELEMENTARY SCHOOL VOCAL SOLO

EV-6027	Gr.7&8 boys (changed) <i>Un Canadian Errant, Traditional arr.H. Wilson, Folk Songs of Canada - also Songtime 7 page 68</i>	\$10.00
EV-6028	Gr.7&8 girls (high) <i>The Sweet Nightingale, Anderson, Leslie 1061</i>	\$10.00
EV-6029	Gr.7&8 girls (low) <i>Sunday, Johann Brahm, RCM, page 128</i>	\$10.00

### ELEMENTARY SCHOOL ENSEMBLE

| Provide original music for the Adjudicator.

EV-6003	Trio - Any age/grade <i>Cielto Lindo, Songtime 7, page 38</i>	\$20.00
EV-6004	Quartette - Any age/grade <i>The Blue Tail Fly, Songtime 8, page 28</i>	\$20.00
EV-6005	Double Duet Gr. 4-6 <i>Spring Is Here, Anderson, Leslie, 2009</i>	\$20.00
EV-6006	Double Duet Gr.7&8 <i>Tum Balaika, Songtime 7, page 109</i>	\$20.00
EV-6007	Triple Trio (SSA) Open <i>Somewhere a Child is Singing, Peter W. Dykema, Songtime 8, page 68</i>	\$20.00
EV-6008	Small Ensemble (SA) - up to 15 voices <i>Take These Wings, Don Besig, Shawnee Press</i>	\$20.00
EV-6009	Small Ensemble (SSA) - up to 15 voices <i>All Through the Night, arr. W.H. Anderson, Leslie 3003</i>	\$20.00

### ELEMENTARY SCHOOL CLASSROOM CHOIR

- All classes are "Own Choice." Provide original music for the Adjudicator.
- Members of choirs must be from the same classroom.
- Each choir may have a warm-up song of its own choice. The second song will be evaluated.

EV-6030	Kindergarten Choir (Adjudication only)	\$20.00
EV-6031	Gr.1 Choir (Adjudication Only)	\$20.00
EV-6032	Gr.2 Choir (Adjudication Only)	\$20.00
EV-6033	Gr.3 Choir	\$20.00
EV-6034	Gr.4 Choir	\$20.00
EV-6035	Gr.5 Choir (Unison)	\$20.00
EV-6036	Gr.5 Choir (2 Part)	\$20.00
EV-6037	Gr.6 Choir (Unison)	\$20.00
EV-6038	Gr.6 Choir (2 Part)	\$20.00
EV-6039	Gr.7&8 Choir (Unison)	\$20.00
EV-6040	Gr.7&8 (SA)	\$20.00
EV-6041	Gr.7&8 (SSA)	\$20.00
EV-6042	Mixed Choir - up to 50 voices	\$20.00
EV-6043	Mass Choir (40 and over voices)	\$20.00

# Midland Music Festival - Syllabus 2011

## ENGLISH VOCAL

### ELEMENTARY SCHOOL GLEE CLUB

- Glee Club members may be from different classrooms.
- Each Glee Club may have a warm-up song.
- The second song will be evaluated.

EV-6044	Primary Glee Club <i>Colours, Harry Brook, RCM Intro.</i>	\$20.00
EV-6045	Junior Glee Club (Unison) <i>Handsome Butcher, Hungarian Folk Song, arr. Matyas Sieber, RCM 2</i>	\$20.00
EV-6046	Junior Glee Club (2 Part) <i>Sing a Rainbow, Hamilton, Shawnee Press ME69</i>	\$20.00
EV-6047	Intermediate Glee Club (SA) <i>One World - from the Musical 'Cosmic Pinball', Philip Kern, Leslie Music Supply</i>	\$20.00
EV-6048	Intermediate Glee Club (SSA) <i>Shalom to You, My Friend, Naplan, Shawnee Press Bo576</i>	\$20.00
EV-6049	Intermediate Glee Club (SAB) <i>"Own Choice"</i>	\$20.00

### ELEMENTARY SCHOOL SOLO - Native Language

- When possible an English translation is to be provided to the Adjudicator. Music is "Own Choice".
- This does not include the official languages.

EV-6050	Any grade - Male voice	\$10.00
EV-6051	Any grade - Female voice	\$10.00

### ELEMENTARY SCHOOL DUETS

EV-6002	Grade 3 & under	\$15.00
EV-6090	Grades 4 - 6	\$15.00
EV-6091	Grades 7 - 8	\$15.00

### SECONDARY SCHOOL ENSEMBLE

- Two contrasting pieces to be performed.
- Music is "Own Choice".

EV-6052	Gr.9-12	\$20.00
EV-6053	Gr.9-12	\$20.00
EV-6054	Gr.9-12	\$20.00

### SECONDARY SCHOOL CHOIR

- Choirs may perform two contrasting pieces of "Own Choice".

EV-6055	Choir SA, Gr.9-12	\$20.00
EV-6056	Choir SSA, Gr.9-12	\$20.00
EV-6057	Choir SAB, Gr.9-12	\$20.00
EV-6058	Choir SATB, Gr.9-12	\$20.00

### CHURCH CHORAL CLASSES

- Junior Church choir - 13 yrs and under.
- Two "Own Choice" contrasting pieces to be performed. Provide original music for the Adjudicator.

EV-6059	Jr.Church Choir - Unison	\$20.00
EV-6060	Jr.Church Choir - SA	\$20.00
EV-6061	Jr.Church Choir - SSA	\$20.00
EV-6062	Sr. Church Choir - SA	\$20.00
EV-6063	Sr. Church Choir - SSA	\$20.00
EV-6064	Sr. Church Choir - SAB	\$20.00
EV-6065	Sr. Church Choir - SATB	\$20.00
EV-6066	Church or Sunday School	\$20.00

### OPEN CHORAL CLASSES

- 16 members or more.
- Two "Own Choice" contrasting pieces to be performed. Provide original music for the Adjudicator.

EV-6067	Choir - Unison	\$20.00
EV-6068	Choir - SA	\$20.00
EV-6069	Choir - SSA	\$20.00
EV-6070	Choir - SAB	\$20.00
EV-6071	Choir - SATB	\$20.00
EV-6072	Pop or Jazz Choir (any voicing)	\$20.00

### OPEN ENSEMBLE CLASSES

- 15 members or less.
- Two "Own Choice" contrasting pieces to be performed. Provide original music for the Adjudicator.

EV-6073	Unison	\$20.00
EV-6074	SA	\$20.00
EV-6075	SSA	\$20.00
EV-6076	SAB	\$20.00
EV-6077	SATB	\$20.00

### SOLO/ENSEMBLE - FOR YOUNG CHILDREN

- Participants must be 8 years or under.
- Any recognized teaching method is acceptable.

EV-6078	5 yrs. and under	\$10.00
EV-6079	6 to 8yrs.	\$10.00

### GRADED VOCAL SOLOS

EV-6080	Introductory Grade	\$10.00
EV-6600	Grade 1	\$10.00
EV-6601	Grade 2	\$10.00
EV-6602	Grade 3	\$10.00

# Midland Music Festival - Syllabus 2011

## ENGLISH VOCAL

---

### GRADED VOCAL SOLOS

EV-6603	Grade 4	\$10.00
EV-6604	Grade 5	\$10.00
EV-6605	Grade 6	\$10.00
EV-6606	Grade 7	\$10.00
EV-6607	Grade 8	\$10.00
EV-6608	Grade 9	\$10.00
EV-6609	Grade 10	\$10.00
EV-6619	Open	\$10.00

---

### TRADITIONAL FOLK SONG - MALE

|Any Traditional Folk Song with a Conservatory Arrangement.

EV-6648	8 yrs. and under	\$10.00
EV-6649	10 yrs. and under	\$10.00
EV-6650	12 yrs. and under	\$10.00
EV-6651	14 yrs. and under	\$10.00
EV-6652	16 yrs. and under	\$10.00
EV-6653	18 yrs. and under	\$10.00
EV-6654	Open	\$10.00

---

### TRADITIONAL FOLK SONG - FEMALE

|See previous description.

EV-6655	8 yrs. and under	\$10.00
EV-6656	10 yrs. and under	\$10.00
EV-6657	12 yrs. and under	\$10.00
EV-6658	14 yrs. and under	\$10.00
EV-6659	16 yrs. and under	\$10.00
EV-6660	18 yrs. and under	\$10.00
EV-6661	Open	\$10.00

---

### MODERN FOLK SONG SOLO - MALE

Any Folk Song Traditional or Contemporary with a Contemporary Arrangement.

EV-6662	8 yrs. and under	\$10.00
EV-6663	10 yrs. and under	\$10.00
EV-6664	12 yrs. and under	\$10.00
EV-6665	14 yrs. and under	\$10.00
EV-6666	16 yrs. and under	\$10.00
EV-6667	18 yrs. and under	\$10.00
EV-6668	Open	\$10.00

---

### MODERN FOLK SONG SOLO - FEMALE

See previous description.

EV-6669	8 yrs. & under	\$10.00
EV-6670	10 yrs. & under	\$10.00
EV-6671	12 yrs. & under	\$10.00
EV-6672	14 yrs. & under	\$10.00
EV-6673	16 yrs. & under	\$10.00
EV-6674	18 yrs. & under	\$10.00
EV-6675	Open	\$10.00

---

### ART SONG - MALE

EV-6620	8 yrs. and under	\$10.00
EV-6621	10 yrs. and under	\$10.00
EV-6622	12 yrs. and under	\$10.00
EV-6623	14 yrs. and under	\$10.00
EV-6624	16 yrs. and under	\$10.00
EV-6625	18 yrs. and under	\$10.00
EV-6626	Open	\$10.00

---

### ART SONG - FEMALE

EV-6627	8 yrs. and under	\$10.00
EV-6628	10 yrs. and under	\$10.00
EV-6629	12 yrs. and under	\$10.00
EV-6630	14 yrs. and under	\$10.00
EV-6631	16 yrs. and under	\$10.00
EV-6632	18 yrs. and under	\$10.00
EV-6633	Open	\$10.00

---

### FOREIGN LANGUAGE - MALE

• Music in the Foreign Language class must be in a language other than Canada's official languages.

EV-6634	8 yrs. and under	\$10.00
EV-6635	10 yrs. and under	\$10.00
EV-6636	12 yrs. and under	\$10.00
EV-6637	14 yrs. and under	\$10.00
EV-6638	16 yrs. and under	\$10.00
EV-6639	18 yrs. and under	\$10.00
EV-6640	Open	\$10.00

---

### FOREIGN LANGUAGE - FEMALE

• See preceding description.

EV-6641	8 yrs. and under	\$10.00
---------	------------------	---------

# Midland Music Festival - Syllabus 2011

## ENGLISH VOCAL

---

### FOREIGN LANGUAGE - FEMALE

- See preceding description.

EV-6642	10 yrs. and under	\$10.00
EV-6643	12 yrs. and under	\$10.00
EV-6644	14 yrs. and under	\$10.00
EV-6645	16 yrs. and under	\$10.00
EV-6646	18 yrs. and under	\$10.00
EV-6647	Open	\$10.00

---

### CANADIAN COMPOSER - MALE

- Selections must be written and arranged by a Canadian composer in a conservatory style.
- Must not include Pop, Rock, Jazz or Sacred entries.

EV-6100	8 yrs. & under	\$10.00
EV-6101	10 yrs. & under	\$10.00
EV-6102	12 yrs. & under	\$10.00
EV-6103	14 yrs. & under	\$10.00
EV-6104	16 yrs. & under	\$10.00
EV-6105	18 yrs. & under	\$10.00
EV-6106	Open	\$10.00

---

### CANADIAN COMPOSER - FEMALE

- See preceding description.

EV-6107	8 yrs. and under	\$10.00
EV-6108	10 yrs. and under	\$10.00
EV-6109	12 yrs. and under	\$10.00
EV-6110	14 yrs. and under	\$10.00
EV-6111	16 yrs. and under	\$10.00
EV-6112	18 yrs. and under	\$10.00
EV-6113	Open	\$10.00

---

### SACRED SOLO/TRADITIONAL - MALE

- |Includes any Traditional Sacred Song with a Conservatory arrangement.

EV-6300	8 yrs. and under	\$10.00
EV-6301	10 yrs. and under	\$10.00
EV-6302	12 yrs. and under	\$10.00
EV-6303	14 yrs. and under	\$10.00
EV-6304	16 yrs. and under	\$10.00
EV-6305	18 yrs. and under	\$10.00
EV-6306	Open	\$10.00

---

### SACRED SOLO/TRADITIONAL - FEMALE

- |See previous description.

EV-6307	8 yrs. and under	\$10.00
EV-6308	10 yrs. and under	\$10.00
EV-6309	12 yrs. and under	\$10.00
EV-6310	14 yrs. and under	\$10.00
EV-6311	16 yrs. and under	\$10.00
EV-6312	18 yrs. and under	\$10.00
EV-6314	Open	\$10.00

---

### SACRED SOLO/CONTEMPORARY - MALE

- |Excludes all Conservatory or Classical arrangements

EV-6315	8 yrs & under	\$10.00
EV-6316	10 yrs & under	\$10.00
EV-6317	12 yrs & under	\$10.00
EV-6318	14 yrs & under	\$10.00
EV-6319	16 yrs & under	\$10.00
EV-6320	18 yrs & under	\$10.00
EV-6321	Open	\$10.00

---

### SACRED SOLO/CONTEMPORARY - FEMALE

- |See preceding description

EV-6322	8 yrs & under	\$10.00
EV-6323	10 yrs & under	\$10.00
EV-6324	12 yrs & under	\$10.00
EV-6325	14 yrs & under	\$10.00
EV-6326	16 yrs & under	\$10.00
EV-6327	18 yrs & under	\$10.00
EV-6338	Open	\$10.00

---

### SCARED SOLO/CLASSICAL - FEMALE

- |Includes any Scared song with a Classical arrangement.

EV-6347	8 yrs & under	\$10.00
EV-6348	10 yrs & under	\$10.00
EV-6349	12 yrs & under	\$10.00
EV-6350	14 yrs & under	\$10.00
EV-6351	16 yrs & under	\$10.00
EV-6352	18 yrs & under	\$10.00
EV-6353	Open	\$10.00

---

### SCARED SOLO/CLASSICAL - MALE

- |Includes any Scared song with a Classical arrangement.

EV-6340	8 yrs & under	\$10.00
---------	---------------	---------

# Midland Music Festival - Syllabus 2011

## ENGLISH VOCAL

---

### SCARED SOLO/CLASSICAL - MALE

|Includes any Scared song with a Classical arrangement.

EV-6341	10 yrs & under	\$10.00
EV-6342	12 yrs & under	\$10.00
EV-6343	14 yrs & under	\$10.00
EV-6344	16 yrs & under	\$10.00
EV-6345	18 yrs & under	\$10.00
EV-6346	Open	\$10.00

---

### CONTEMPORARY COMPOSER-MALE

- "Own Choice".
- Piece does NOT need to be chosen from the current RCM/CC syllabi.

EV-6120	8 yrs & under	\$10.00
EV-6121	10 yrs & under	\$10.00
EV-6122	12 yrs & under	\$10.00
EV-6123	14 yrs & under	\$10.00
EV-6124	16 yrs & under	\$10.00
EV-6125	18 yrs & under	\$10.00
EV-6126	Open	\$10.00

---

### CONTEMPORARY COMPOSER-FEMALE

- See preceding description.

EV-6127	8 yrs & under	\$10.00
EV-6128	10 yrs & under	\$10.00
EV-6129	12 yrs & under	\$10.00
EV-6130	14 yrs & under	\$10.00
EV-6131	16 yrs & under	\$10.00
EV-6132	18 yrs & under	\$10.00
EV-6133	Open	\$10.00

---

### JAZZ - BLUES - FEMALE

EV-6800	6 yrs & under	\$10.00
EV-6801	8 yrs & under	\$10.00
EV-6802	10 yrs & under	\$10.00
EV-6803	12 yrs & under	\$10.00
EV-6804	14 yrs & under	\$10.00
EV-6805	16 yrs & under	\$10.00
EV-6806	18 yrs & under	\$10.00
EV-6807	Open	\$10.00

---

### JAZZ - BLUES - MALE

EV-6810	6 yrs & under	\$10.00
---------	---------------	---------

---

### JAZZ - BLUES - MALE

EV-6811	8 yrs & under	\$10.00
EV-6812	10 yrs & under	\$10.00
EV-6813	12 yrs & under	\$10.00
EV-6814	14 yrs & under	\$10.00
EV-6815	16 yrs & under	\$10.00
EV-6816	18 yrs & under	\$10.00
EV-6817	Open	\$10.00

---

### OPERATIC ARIA

EV-6980	16 yrs. - 18 yrs.	\$10.00
EV-6981	Open	\$10.00

---

### MUSICAL THEATRE - MALE

|This sections may use Costumes & Props

EV-6200	10 yrs & under	\$10.00
EV-6201	12 yrs & under	\$10.00
EV-6202	14 yrs & under	\$10.00
EV-6203	16 yrs & under	\$10.00
EV-6204	18 yrs & under	\$10.00
EV-6205	Open	\$10.00

---

### MUSICAL THEATRE - FEMALE

|See previous description

EV-6207	6 yrs & under	\$10.00
EV-6208	8 yrs & under	\$10.00
EV-6209	9 yrs & under	\$10.00
EV-6210	10 yrs & under	\$10.00
EV-6211	11 yrs & under	\$10.00
EV-6212	12 yrs. and under	\$10.00
EV-6213	13 yrs and under	\$10.00
EV-6214	14 yrs & under	\$10.00
EV-6215	15 yrs & under	\$10.00
EV-6216	16 yrs & under	\$10.00
EV-6218	18 yrs & under	\$10.00
EV-6219	Open	\$10.00

---

### MUSICAL THEATRE DUET/TRIO

|See previous description

EV-6224	Junior - 12 yrs & under	\$15.00
EV-6225	Intermediate - 15 yrs & under	\$15.00
EV-6226	Senior - 18 yrs & under	\$15.00

# Midland Music Festival - Syllabus 2011

## ENGLISH VOCAL

### MUSICAL THEATRE ENSEMBLES

|See previous description.

EV-6220	Junior - 12yrs & under	\$20.00
EV-6221	Intermediate - 15yrs & under	\$20.00
EV-6222	Senior - 18yrs & under	\$20.00
EV-6223	Open	\$20.00

### POP & MOVIE/ TV SOLO - MALE

EV-6500	6 yrs & under	\$10.00
EV-6501	8 yrs. and under	\$10.00
EV-6502	10 yrs. and under	\$10.00
EV-6504	12 yrs. and under	\$10.00
EV-6506	14 yrs. and under	\$10.00
EV-6508	16 yrs. and under	\$10.00
EV-6510	18 yrs. and under	\$10.00
EV-6511	Open	\$10.00

### POP & MOVIE/TV SOLO - FEMALE

EV-6512	6 yrs & under	\$10.00
EV-6513	8 yrs. & under	\$10.00
EV-6514	9 yrs. and under	\$10.00
EV-6515	10 yrs. & under	\$10.00
EV-6516	11 yrs. and under	\$10.00
EV-6517	12 yrs. & under	\$10.00
EV-6518	13 yrs. and under	\$10.00
EV-6519	14 yrs. & under	\$10.00
EV-6520	15 yrs. and under	\$10.00
EV-6521	16 yrs. & under	\$10.00
EV-6522	18 yrs. and under	\$10.00
EV-6523	Open	\$10.00

### DUET

• No performer may sing twice in the same class.

EV-6956	8 yrs. and under	\$15.00
EV-6957	10 yrs. and under	\$15.00
EV-6958	12 yrs. and under	\$15.00
EV-6959	14 yrs. and under	\$15.00
EV-6960	16 yrs. and under	\$15.00
EV-6961	18 yrs. and under	\$15.00
EV-6962	Open	\$15.00

### DOUBLE DUET

• No performer may sing twice in the same class.

EV-6963	8 yrs. and under	\$20.00
EV-6964	10 yrs. and under	\$20.00
EV-6965	12 yrs. and under	\$20.00
EV-6966	16 yrs. and under	\$20.00
EV-6967	Open	\$20.00
EV-6992	14 yrs & under	\$20.00

### TRIO

• No performer may sing twice in the same class.

EV-6968	8 yrs. and under	\$15.00
EV-6969	10 yrs. and under	\$15.00
EV-6970	12 yrs. and under	\$15.00
EV-6971	14 yrs. and under	\$15.00
EV-6972	16 yrs. and under	\$15.00
EV-6973	Open	\$15.00

### QUARTETTE

• No performer may sing twice in the same class.

EV-6974	8 yrs. and under	\$20.00
EV-6975	10 yrs. and under	\$20.00
EV-6976	12 yrs. and under	\$20.00
EV-6977	16 yrs. and under	\$20.00
EV-6978	Open	\$20.00
EV-6993	14 yrs & under	\$20.00

### LIEDER CLASS

• Vocalist and accompanist must be 18 years or under. Both participants must be at comparable music levels of study and will be adjudicated as a team. The pianist may play for only one participant. Only German Lieder may be performed in this class. To be accepted, both names must be on the Entry Form.  
• Compositions from the RCM/CC syllabi must be used and the performer will give the music to the Adjudicator.

EV-6982	18 yrs. and under	\$15.00
---------	-------------------	---------

### CONCERT PROGRAM CLASS

• This class is intended for advanced voice students. The program will encompass standard concert repertoire, must include 3 pieces (one must be in a foreign language and one must be an operatic aria). The program is NOT to exceed 10 minutes in duration. Music must be chosen from the current RCM/CC syllabi. Special attention shall be focused on appropriateness of selections, stage presence, poise and general effect, as well as a high standard of vocal ability and musicianship.

EV-6983	Intermediate-Grade 8 &/or 9 RCM/CC	\$10.00
EV-6984	Senior-Grade 10 and/or Associate	\$10.00

# Midland Music Festival - Syllabus 2011

## ENGLISH VOCAL

---

### YOUNG ENTERTAINER CLASS

- Repertoire is "Own Choice" of a minimum of three contrasting songs, excluding pieces performed in other classes of this Festival, that exemplify the ability of the soloist. The program is NOT to exceed 10 minutes in duration. Special attention shall be focused on the ability to communicate, express and entertain as well as the appropriateness of selections, stage presence and musicianship.

EV-6985	15 yrs. & under	\$10.00
EV-6986	16 yrs. - 18yrs.	\$10.00
EV-6987	Open	\$10.00

---

### FAMILY DUET, TRIO or ENSEMBLE

- Each duet, trio or ensemble must include one parent/guardian. An adjudication and certification of participation will be awarded to each family member, but no marks or trophies will be presented. Music need not be memorized.

EV-6988	Own choice	\$15.00
---------	------------	---------

---

### VOCAL - OWN ACCOMPANIMENT

| Performer must be their own accompanist.

EV-6850	8 yrs & under	\$10.00
EV-6851	10 yrs & under	\$10.00
EV-6852	12 yrs & under	\$10.00
EV-6853	14 yrs & under	\$10.00
EV-6854	16 yrs & under	\$10.00
EV-6855	18 yrs & under	\$10.00
EV-6856	Open	\$10.00

---

### MASTER CLASS

- Open class - music is "Own Choice" of one piece.
- The selection being performed may be a new work being prepared for competition, examinations, or auditions in the future, repertoire performed in previous years that has been perfected, repertoire that has been performed in the current festival year, etc.
- Presentation of music will be followed by suggestions and ideas of the Adjudicator.
- Personal invitation by Adjudicator may be issued.

EV-6989	Grades 5-8 Solo	\$10.00
EV-6990	Grade 9-ARCT Solo	\$10.00
EV-6991	Ensemble	\$20.00

---

# Midland Music Festival - Syllabus 2011

## VOCAL FRANÇAISE

POUR LES ÉCOLES ÉLÉMENTAIRES FRANÇAISES : Les étudiants et les étudiantes qui prennent des leçons formelles de voix ne peuvent pas participer à cette partie de la compétition.

Questions dirigées à Germaine Lespérance au 549-3677

### SOLOS VOCAUX

FV-5000	Maternelle garçons (Non compétitif) <i>Ainsi font, font, font</i>	\$10.00
FV-5001	Maternelle filles (Non compétitif) <i>Ainsi font, font, font</i>	\$10.00
FV-5002	Jardin garçons (Non compétitif) <i>Le jeu du train</i>	\$10.00
FV-5003	Jardin filles (Non compétitif) <i>Le jeu du train</i>	\$10.00
FV-5004	Fanfare Jardin - au choix <i>au choix</i>	\$10.00
FV-5005	Fanfare 1ère année - au choix <i>au choix</i>	\$10.00
FV-5006	1ère année garçons <i>Roboto</i>	\$10.00
FV-5007	1ère année filles <i>Farandole des astronautes</i>	\$10.00
FV-5008	2ième année garçons <i>Mon chien savant</i>	\$10.00
FV-5009	2ième année filles <i>Les petits lapins</i>	\$10.00
FV-5010	3ième année garçons <i>Le cosmonaute</i>	\$10.00
FV-5011	3ième année filles <i>Bei oiseau</i>	\$10.00
FV-5012	4ième année garçons <i>Vive la Canadienne</i>	\$10.00
FV-5013	4ième année filles <i>L'harmonie</i>	\$10.00
FV-5014	5ième année garçons <i>Entends la nature</i>	\$10.00
FV-5015	5ième année filles <i>Le chant musicien</i>	\$10.00
FV-5016	6ième année garçons <i>Le joyeux promeneur</i>	\$10.00
FV-5017	6ième année filles <i>Le doux chagrin</i>	\$10.00
FV-5018	7ième année garçons <i>au choix</i>	\$10.00
FV-5019	7ième année filles <i>au choix</i>	\$10.00
FV-5020	8ième année garçons <i>au choix</i>	\$10.00
FV-5021	8ième année filles <i>au choix</i>	\$10.00

### DUOS ET TRIOS

FV-5022	Duo - 10 ans ou moins <i>au choix</i>	\$15.00
FV-5023	Duo - 15 ans ou moins <i>au choix</i>	\$15.00
FV-5024	Trio - 10 ans ou moins <i>au choix</i>	\$15.00
FV-5025	Trio - 15 ans ou moins <i>au choix</i>	\$15.00
FV-5042	Duo ou trio famille (qui inclt 1 parent) <i>au choix</i>	\$15.00

### ENSEMBLES

FV-5026	Petit ensemble SA (maximum de 12 voix) <i>au choix</i>	\$20.00
FV-5027	Petit ensemble SSA (maximum de 12 voix) <i>au choix</i>	\$20.00
FV-5028	Petit ensemble SSAA (maximum de 12 voix) <i>au choix</i>	\$20.00

### CHORALES DE CLASSES

FV-5029	Jardin (Non compétitif) <i>Notre ane</i>	\$20.00
FV-5030	1ere année <i>Mon ami Jeremie</i>	\$20.00
FV-5031	2ieme année <i>La maison que Jacques a batie</i>	\$20.00
FV-5032	3ieme année <i>J'ai connu un fermier</i>	\$20.00
FV-5033	4ieme année <i>Le tournesol</i>	\$20.00
FV-5034	5ieme année <i>La boheme</i>	\$20.00
FV-5035	6ieme année <i>Sur la route de Berthier</i>	\$20.00
FV-5036	7e année <i>au choix</i>	\$20.00
FV-5037	8e année <i>au choix</i>	\$20.00
FV-5043	Matemelle (Non compétitif) <i>au choix</i>	\$20.00

### CHORALES

CYCLES PRIMAIRE, MOYEN ET INTERMÉDIAIRE ET CHORALE D'ÉCOLE.		
FV-5038	Chorale primaire (1ière à 3e) <i>Notre monde est si petit</i>	\$20.00
FV-5039	Chorale moyen (4e à 6e) <i>au choix</i>	\$20.00
FV-5040	Chorale intermédiaire (7e à 8e) <i>au choix</i>	\$20.00



# Midland Music Festival - Syllabus 2011

## ORIGINAL COMPOSITION

Original Compositions will be adjudicated on performance/showmanship and written Score.

A summary explaining the inspiration and the basic elements of the composition must be included with the Score, along with the first 20 measures. The written Score will be assessed on originality and competence in handling form, harmony, melody, and rhythm.

Scores must be clear and legible with all bars numbered: photocopies are accepted. A recording must be included with the Score.

Entrants are advised to keep a copy.

Scores are to be received by the Music Festival by April 1st of any Festival year by mailing to: The Midland Y's Men's Music Festival 338 King Street Midland ON L4R 3M8

Inquiries: Please call the Festival Original Composition Advisor, Brent Robitaille 549-2377

### ORIGINAL COMPOSITION - MASTER CLASS

- Personal invitation by Adjudicator may be issued.

OC-1011	Creating Original Composition - Students	\$10.00
OC-1012	Teaching Composition - Teachers Only	\$10.00

### ORIGINAL COMPOSITION - JUNIOR

- These classes are for entrants who are at the Grade 5 piano level or under in RCM/CC music studies.

OC-1000	Vocal Solo	\$10.00
OC-1001	Instrumental Solo (piano, brass, woodwind, guitar or perc	\$10.00

### ORIGINAL COMPOSITION - INTERMEDIATE

- These classes are for entrants who are at the Grade 6 to 8 piano level in RCM/CC music studies.

OC-1002	Vocal Solo	\$10.00
OC-1003	Instrumental Solo (piano, brass, woodwind, guitar or perc	\$10.00
OC-1004	Vocal Ensemble	\$20.00
OC-1005	Instrumental Ensemble (piano, brass, woodwind, guitar or	\$20.00

### ORIGINAL COMPOSITION - SENIOR

- These classes are for entrants who are at the Grade 9 or Performer's ARCT piano level in RCM/CC music studies.

OC-1006	Vocal Solo	\$10.00
OC-1007	Instrumental Solo (piano, brass, woodwind, guitar or perc	\$10.00
OC-1008	Vocal Ensemble	\$20.00
OC-1009	Instrumental Ensemble (piano, brass, woodwind, guitar or	\$20.00

### ORIGINAL ELECTRO-ACOUSTIC COMPOSITION

- This category includes any electronic instrument which produces sound such as a computer, synthesizer, or sampler. The composition could be a combination of electronic sounds with acoustic instruments and/or voice. The composition may be generated using a sequencer and/or a music notation program. Or it may be created using sound editing/missing software. In any case, the submission must be an original composition. The work should be submitted on a cassette tape or a compact disc (not as a midi file). The submission should also include a written description and explanation of how the piece was created. Competitors are encouraged to submit a Score, a minimum of 8, 12 or 16 measures (if at all possible).

OC-1010	Open	\$10.00
---------	------	---------

# Midland Music Festival - Syllabus 2011

## RECORDER

Inquiries: Please call the Festival Recorder Syllabus advisor, Germaine Lespérance at École St-Louis, 549-3677.

### SOLO

- Music - "Own Choice"

R-3000	1 yr. or less school study	\$10.00
R-3001	2 yrs. or less school study	\$10.00
R-3002	3 yrs. or less school study	\$10.00
R-3003	More than 3 yrs. school study	\$10.00

### DUET

- Music - "Own Choice"

R-3004	1 yr. or less school study	\$15.00
R-3005	2 yrs. or less school study	\$15.00
R-3006	3 yrs. or less school study	\$15.00
R-3007	More than 3 yrs. school study	\$15.00

### ENSEMBLES SMALL

- 6 or less performers.

R-3008	1 yr. or less school study	\$20.00
R-3009	2 yrs. or less school study	\$20.00
R-3010	3 yrs. or less school study	\$20.00
R-3011	More than 3 yrs. school study	\$20.00
R-3012	Open - Mixed yrs. of study	\$20.00

### ENSEMBLES LARGE

- 7 or more performers.

R-3013	1 yr or less school study	\$20.00
R-3014	2 yrs or less school study	\$20.00
R-3015	3 yrs or less school study	\$20.00
R-3016	More than 3 yrs school study	\$20.00
R-3017	Open-Mixed yrs of study	\$20.00

### ENSEMBLES - ORFF ACCOMPANIMENT

- Minimum of 3 performers.

R-3018	1 yr. or less school study	\$20.00
R-3019	2 yrs. or less school study	\$20.00
R-3020	3 yrs. or less school study	\$20.00
R-3021	More than 3 yrs. school study	\$20.00
R-3022	Open - Mixed yrs. of study	\$20.00
R-3030	1 Year or less	\$0.00

### ENSEMBLES - UKELELE ACCOMPANIMENT

- Minimum of 3 performers.

R-3023	1 yr or less school study	\$20.00
R-3024	2 yrs or less school study	\$20.00
R-3025	3 yrs or less school study	\$20.00
R-3026	More than 3 yrs school study	\$20.00
R-3027	Open-Mixed yrs of study	\$20.00

### ORFF ENSEMBLE

- Minimum of 6 performers

R-3031	1 yr or less school study	\$20.00
R-3032	2 yrs or less school study	\$20.00
R-3033	3 yrs or less school study	\$20.00
R-3034	More then 3 yrs school study	\$20.00
R-3035	Open - Mixed yrs of study	\$20.00

### MASTERCLASS WORKSHOP

- Open Class.
- Own choice of one piece
- The selection being performed may be a new work being prepared for competition, examinations, or auditions in the future, repertoire performed in previous years that has been perfected, repertoire that has been performed in the current Festival year, etc.
- Presentation of music will be followed by suggestions/ideas of the Adjudicator
- Personal invitation by Adjudicator may be issued.

R-3028	Solo	\$10.00
R-3029	Ensemble	\$20.00

# Midland Music Festival - Syllabus 2011

## INSTRUMENTAL

School participants must be registered with the school and observe age guidelines.

If entering more than one class, different music pieces must be performed in each class. All classes are "Own Choice" unless otherwise indicated. Provide original music to the Adjudicator.

Students must provide own accompanist.

Inquiries: Please call the Festival Instrumental Syllabus advisor, Blake Smith at 549-5866.

### WOODWIND SOLO - GENERAL

- Woodwind instruments: flute, oboe, clarinet, saxophone, bassoon.

I-4000	Elementary School study	\$10.00
I-4001	1 yr. or less Secondary School study	\$10.00
I-4002	2 yrs. or less Secondary School study	\$10.00
I-4003	More than 2 yrs. Secondary School study	\$10.00

### WOODWIND SOLO - GRADED

- Participants under private tutelage may be any age and may enter any number of classes in this section at their present level of study or above.
- For privately tutored students who do not participate in conservatory exams, the student may enter a grade equivalent determined by their teacher.
- Music must be chosen from a RCM or CC syllabus.

I-4004	Grade 2	\$10.00
I-4005	Grade 4	\$10.00
I-4006	Grade 6	\$10.00
I-4007	Grade 8	\$10.00
I-4008	Grade 9	\$10.00
I-4009	Open	\$10.00

### WOODWIND SOLO-STUDIES

- Participants under private tutelage may be any age and may enter any number of classes in this section at their present level of study or above
- For privately tutored students who do not participate in conservatory exams, the student may enter a grade determined by their teacher
- Music must be from RCM or CC syllabi

I-4010	Grade 2	\$10.00
I-4011	Grade 4	\$10.00
I-4012	Grade 6	\$10.00
I-4013	Grade 8	\$10.00
I-4014	Grade 9	\$10.00
I-4015	Grade 10	\$10.00
I-4016	Associate	\$10.00

### BRASS SOLO - GENERAL

- Brass instruments: trumpet, cornet, French horn, trombone, euphonium, tuba.

I-4017	Elementary School study	\$10.00
I-4018	1 yr. or less Secondary School study	\$10.00
I-4019	2 yrs. or less Secondary School study	\$10.00

### BRASS SOLO - GENERAL

- Brass instruments: trumpet, cornet, French horn, trombone, euphonium, tuba.

I-4020	More than 2 yrs. Secondary School study	\$10.00
--------	---	---------

### BRASS SOLO - GRADED

- Participants under private tutelage may be any age and may enter any number of classes in this section at their present level of study or above.
- For privately tutored students who do not participate in conservatory exams, the student may enter a grade equivalent determined by their teacher.
- Music must be chosen from the RCM or CC syllabus.

I-4021	Grade 2	\$10.00
I-4022	Grade 4	\$10.00
I-4023	Grade 6	\$10.00
I-4024	Grade 8	\$10.00
I-4025	Grade 9	\$10.00
I-4026	Open	\$10.00

### BRASS SOLO-STUDIES

- Participants under private tutelage may be any age and may enter any number of classes in this section at their present level of study or above
- For privately tutored students who do not participate in conservatory exams, the student may enter a grade determined by their teacher
- Music must be from RCM or CC syllabi

I-4027	Grade 2	\$10.00
I-4028	Grade 4	\$10.00
I-4029	Grade 6	\$10.00
I-4030	Grade 8	\$10.00
I-4032	Grade 9	\$10.00
I-4033	Grade 10	\$10.00
I-4034	Associate	\$10.00

### INSTRUMENTAL DUET

- Any instrument.

I-4035	Elementary School - Woodwind Duet	\$15.00
I-4036	Elementary School - Brass Duet	\$15.00
I-4037	Elementary School - Mixed Duet	\$15.00
I-4038	Secondary School - Woodwind Duet  2 yrs or less of study	\$15.00
I-4039	Secondary School - Woodwind Duet  More than 2 yrs of st	\$15.00
I-4040	Secondary School - Brass Duet  2 yrs or less of study	\$15.00
I-4041	Secondary School - Brass Duet  More than 2 yrs of study	\$15.00
I-4042	Secondary School - Mixed Duet  2 yrs or less of study	\$15.00
I-4043	Secondary School - Mixed Duet  More than 2 yrs of study	\$15.00
I-4044	Open	\$15.00

# Midland Music Festival - Syllabus 2011

## INSTRUMENTAL

### INSTRUMENTAL TRIO

- Any instrument.

I-4045	Elementary School - Woodwind Trio	\$20.00
I-4046	Elementary School - Brass Trio	\$20.00
I-4047	Elementary School - Mixed Trio	\$20.00
I-4048	Secondary School - Woodwind Trio  2 yrs or less of study	\$20.00
I-4049	Secondary School - Woodwind Trio  More than 2 yrs of st	\$20.00
I-4050	Secondary School - Brass Trio  2 yrs or less of study	\$20.00
I-4051	Secondary School - Brass Trio  More than 2 yrs of study	\$20.00
I-4052	Secondary School - Mixed Trio  2 yrs or less of study	\$20.00
I-4053	Secondary School - Mixed Trio   More than 2 yrs of study	\$20.00
I-4054	Open	\$20.00

### INSTRUMENTAL QUARTETTE/QUINTETTE OR SEXTETTE

- Any mixed instrumentation.

I-4055	Elementary School - Woodwind	\$20.00
I-4056	Elementary School - Brass	\$20.00
I-4057	Elementary School - Mixed	\$20.00
I-4058	Secondary School - Woodwind  2 yrs or less of study	\$20.00
I-4059	Secondary School - Woodwind   More than 2 yrs of study	\$20.00
I-4060	Secondary School - Brass  2 yrs or less of study	\$20.00
I-4061	Secondary School -Brass   More than 2 yrs of study	\$20.00
I-4062	Secondary School -Mixed   2 yrs or less of study	\$20.00
I-4063	Secondary School - Mixed   More than 2 yrs of study	\$20.00
I-4064	Open	\$20.00

### WOODWIND ENSEMBLES

- Minimum of 5 performers.

I-4065	Elementary School study	\$20.00
I-4066	Secondary School - 2 yrs. or less study	\$20.00
I-4067	Secondary School - more than 2 yrs. Study	\$20.00
I-4068	Open	\$20.00

### BRASS ENSEMBLES

- Minimum of 5 performers.

I-4069	Elementary School study	\$20.00
I-4070	Secondary School - 2 yrs. or less study	\$20.00
I-4071	Secondary School - more than 2 yrs. Study	\$20.00
I-4072	Open	\$20.00

### MIXED ENSEMBLE

- Minimum of 5 performers. Any mixed instrumentation.

I-4073	Elementary School - less than 3 yrs. study	\$20.00
--------	--	---------

### MIXED ENSEMBLE

- Minimum of 5 performers. Any mixed instrumentation.

I-4074	Elementary School - more than 3 yrs. study	\$20.00
I-4075	Secondary School - 2 yrs. or less study	\$20.00
I-4076	Secondary School - more than 2 yrs of Secondary School s	\$20.00
I-4077	Open	\$20.00

### PERCUSSION - Snare, Mallet or Timpani

- "Own Choice"

I-4078	Elementary School study	\$10.00
I-4079	1 yr or less Secondary School study	\$10.00
I-4080	2 yrs or less Secondary School study	\$10.00
I-4081	More than 2 yrs Secondary School study	\$10.00
I-4082	Open	\$10.00

### INSTRUMENTAL FAMILY DUET, TRIO OR ENSEMBLE

- Each duet, trio or ensemble must include one parent/guardian.
- An adjudication and a participation certificate will be awarded to each family member, but no marks or trophies will be presented.
- "Own Choice" music need not be memorized. Provide original music to the Adjudicator.

I-4083	Open	\$15.00
--------	------	---------

### MASTERCLASS WORKSHOP

- Open class - music to be "Own Choice" of one piece
- The selection being performed may be a new work being prepared for competition, examinations, or auditions in the future, repertoire performed in previous years that has been perfected, repertoire that has been performed in the current Festival year, etc.
- Presentation of music will be followed by suggestions and ideas of the Adjudicator.
- Personal invitation by Adjudicator may be issued.

I-4084	Grades 5-8; Solo	\$10.00
I-4085	Grades 9-ARCT; Solo	\$10.00
I-4086	Duet	\$15.00
I-4087	Ensemble	\$20.00

### SCHOOL CONCERT BANDS - GENERAL

- Members of a school band must be registered at that school.
- Membership of band must conform to grades noted.
- Bands may have a SHORT warm-up exercise.
- "Own Choice" of 2 pieces in contrasting style – NOT TO EXCEED 20 minutes – marks may be deducted or disqualification if exceeded.

I-4088	Elementary School study	\$25.00
I-4089	2 yrs. & under Secondary School study	\$25.00
I-4090	More than 2 yrs. Secondary School study	\$25.00
I-4091	Open	\$25.00

# Midland Music Festival - Syllabus 2011

## INSTRUMENTAL

---

### SCHOOL STAGE BANDS

- Members of a school band must be registered at that school.
- Bands may have a short warm-up exercise.
- “Own Choice” of 2 pieces in contrasting style, one to be a jazz/swing style – NOT TO EXCEED 20 minutes – marks may be deducted or disqualification if exceeded.

I-4096	Elementary School study	\$25.00
I-4097	2 yrs and under Secondary School study	\$25.00
I-4098	More than 2 yrs Secondary School study	\$25.00
I-4099	Open	\$25.00

---

### SCHOOL ROCK BAND

- Members of a school band must be registered at that school.
- All members of the Rock Band must belong to the Concert Band and/or the Stage Band.
- Band members must conform to grades noted.
- Bands may have a short warm-up exercise.
- “Own Choice” of 2 pieces in contrasting style (with or without vocalist) – NOT TO EXCEED 20 minutes – marks may be deducted or disqualification if exceeded.

I-4092	Elementary School study	\$25.00
I-4093	2 yrs. & under Secondary School study	\$25.00
I-4094	More than 2 yrs. Secondary School study	\$25.00
I-4095	Open	\$25.00

---

### MASTERCLASS BAND WORKSHOP

- For all Secondary School bands.
- Open class - music is “Own Choice”
- The selection being performed may be a new work being prepared for the future, repertoire performed in previous years that has been perfected, repertoire that has been performed in the current Festival year, etc.
- Presentation of music to be followed by suggestions and ideas of the Adjudicator.
- Personal invitation by Adjudicator may be issued.

I-4100	Open	\$25.00
--------	------	---------

# Midland Music Festival - Syllabus 2011

## GUITAR

Deviations from original music written by a composer must be performed in the Improvisation Category.

All classes are "Own Choice" unless otherwise indicated. Provide original music to the Adjudicator.

Inquiries: Please call the Festival Guitar Music advisor, Brent Robitaille at 549-2377.

### PLECTRUM SOLO - GENERAL

Participants may enter two classes, observing age limits.

G-8000	8 yrs. & under	\$10.00
G-8001	10 yrs. & under	\$10.00
G-8002	12 yrs. & under	\$10.00
G-8003	14 yrs. & under	\$10.00
G-8004	16 yrs. & under	\$10.00
G-8005	18 yrs. & under	\$10.00
G-8006	Open	\$10.00

### PLECTRUM SOLO - ONE YEAR OR LESS TUTELAGE

Enter one class only.

G-8007	Junior - 12 yrs. & under	\$10.00
G-8008	Intermediate - 15 yrs. & under	\$10.00
G-8009	Senior - 18 yrs. & under	\$10.00
G-8010	Open	\$10.00

### PLECTRUM SOLO - TWO YEARS OR LESS TUTELAGE

Enter one class only.

G-8011	Junior - 12 yrs. & under	\$10.00
G-8012	Intermediate - 15 yrs. & under	\$10.00
G-8013	Senior - 18 yrs. & under	\$10.00
G-8014	Open	\$10.00

### PLECTRUM SOLO - MORE THAN TWO YEARS TUTELAGE

Enter one class only.

G-8015	Junior - 12 yrs. & under	\$10.00
G-8016	Intermediate - 15 yrs. & under	\$10.00
G-8017	Senior - 18 yrs. & under	\$10.00

### PLECTRUM - ENSEMBLES

Minimum of 3 performers.

G-8018	12 yrs & under	\$20.00
G-8019	16 yrs & under	\$20.00
G-8020	18 yrs. & under	\$20.00

### CANADIAN COMPOSER SOLO

- May enter two classes, observing age limits.
- Selection must be written or arranged by a Canadian composer.

G-8055	Junior - 12 yrs. & under	\$10.00
G-8056	Intermediate - 15 yrs. & under	\$10.00
G-8057	Senior - 18 yrs. & under	\$10.00
G-8058	Open	\$10.00

### "FINGER STYLE" SOLO - GENERAL

- "Finger picking" melody - popular, classical or folk song.

G-8063	8 yrs. & under	\$10.00
G-8064	10 yrs. & under	\$10.00
G-8065	12 yrs. & under	\$10.00
G-8066	14 yrs. & under	\$10.00
G-8067	16 yrs. & under	\$10.00
G-8068	18 yrs. & under	\$10.00
G-8069	Open	\$10.00

### CLASSICAL SOLO - GENERAL

- Participants may enter two classes, observing age limits.

G-8021	8 yrs. & under	\$10.00
G-8022	10 yrs. & under	\$10.00
G-8023	12 yrs. & under	\$10.00
G-8024	14 yrs. & under	\$10.00
G-8025	16 yrs. & under	\$10.00
G-8026	18 yrs. & under	\$10.00
G-8027	Open	\$10.00

### CLASSICAL SOLO - ONE YEAR OR LESS TUTELAGE

- Enter one class only.

G-8028	Junior - 12 yrs. & under	\$10.00
G-8029	Intermediate - 15 yrs. & under	\$10.00
G-8030	Senior - 18 yrs. & under	\$10.00
G-8031	Open	\$10.00

### CLASSICAL SOLO - TWO YEARS OR LESS TUTELAGE

- Enter one class only.

G-8032	Junior - 12 yrs. & under	\$10.00
G-8033	Intermediate - 15 yrs. & under	\$10.00
G-8034	Senior - 18 yrs. & under	\$10.00
G-8035	Open	\$10.00

# Midland Music Festival - Syllabus 2011

## GUITAR

---

### CLASSICAL SOLO - MORE THAN TWO YEARS TUTELAGE

- Enter one class only.

G-8036	Junior - 12 yrs. & under	\$10.00
G-8037	Intermediate - 15 yrs. & under	\$10.00
G-8038	Senior - 18 yrs. & under	\$10.00
G-8039	Open	\$10.00

---

### CLASSICAL SOLO - GRADED

- May be any age; enter one class only.
- Music must be listed in a current classical guitar syllabus.

G-8040	Grade 1	\$10.00
G-8041	Grade 2	\$10.00
G-8042	Grade 3	\$10.00
G-8043	Grade 4	\$10.00
G-8044	Grade 5	\$10.00
G-8045	Grade 6	\$10.00
G-8046	Grade 7	\$10.00
G-8047	Grade 8	\$10.00
G-8048	Grade 9	\$10.00
G-8049	Grade 10	\$10.00

---

### BLUES/JAZZ - GENERAL

|Enter one class only.

G-8096	Junior - 12 yrs & under	\$10.00
G-8097	Intermediate - 15 yrs & under	\$10.00
G-8098	Senior - 18 yrs & under	\$10.00

---

### POP ROCK - GENERAL

|Enter one class only.

G-8087	Junior - 12 yrs & under	\$10.00
G-8088	Intermediate - 15 yrs & under	\$10.00
G-8089	Senior - 18 yrs & under	\$10.00

---

### BASS GUITAR SOLO

- Enter one class only.

G-8059	Junior - 12 yrs. & under	\$10.00
G-8060	Intermediate - 15 yrs. & under	\$10.00
G-8061	Senior - 18 yrs. & under	\$10.00
G-8062	Open	\$10.00

---

### CLASSICAL DUETS

- Music is "Own Choice"

G-8050	Junior - 12 yrs. & under	\$15.00
--------	--------------------------	---------

---

### CLASSICAL DUETS

- Music is "Own Choice"

G-8051	Intermediate - 15 yrs. & under	\$15.00
G-8052	Senior - 18 yrs. & under	\$15.00

---

### CLASSICAL - ENSEMBLES

- Minimum of 3 performers.

G-8053	Intermediate - 7-15 yrs.	\$20.00
G-8054	Senior - 16 yrs. & over	\$20.00

---

### DUETS- ANY STYLE

- No duet performer may play twice in the same class, but may enter one other class, observing age limits.

G-8070	Junior - 12 yrs. & under	\$15.00
G-8071	Intermediate - 15 yrs. & under	\$15.00
G-8072	Senior 18 yrs. & under	\$15.00
G-8073	Open	\$15.00

---

### MIXED DUET OR ENSEMBLE

- Guitar with any other instrument(s).
- Enter one class only.
- May be an original composition or "Own Choice". Provide original music to the Adjudicator.

G-8074	Junior - 12 yrs. & under	\$15.00
G-8075	Intermediate - 15 yrs. & under	\$15.00
G-8076	Senior - 18 yrs. & under	\$15.00

---

### IMPROVISATION OF ARRANGEMENT

- Participant's improvised arrangement of original music written by a composer.
- Written description of improvisations must be presented to the Adjudicator.

G-8077	Open	\$10.00
--------	------	---------

---

### GUITAR AND FIDDLE DUET

|Enter one class only.

G-8078	Junior - 1 yr. or less tutelage	\$15.00
G-8079	Intermediate - 3 yrs. or less tutelage	\$15.00
G-8080	Senior - more than 3 yrs. Tutelage	\$15.00

---

### ADULT GUITAR SOLO

- One piece in any style (Plectrum, Classical, or Finger Style).
- Amateurs only.

G-8081	Open	\$10.00
--------	------	---------

---

### VOICE WITH OWN GUITAR ACCOMPANIMENT

- A "one-performer" song with guitar accompaniment.

G-8082	Junior - 12 yrs. & under	\$10.00
--------	--------------------------	---------

# Midland Music Festival - Syllabus 2011

## GUITAR

---

### VOICE WITH OWN GUITAR ACCOMPANIMENT

- A "one-performer" song with guitar accompaniment.

G-8083	Intermediate - 15 yrs. & under	\$10.00
G-8084	Senior - 18 yrs. & under	\$10.00
G-8085	Open	\$10.00

---

### FAMILY DUET, TRIO OR ENSEMBLE

- Each duet or trio must include one parent/guardian.
- An Adjudication and certificate of participation will be awarded to each family member, but no marks or trophies will be presented.
- Music, "Own Choice", need not be memorized. Provide original music to Adjudicator.

G-8086	Open	\$15.00
--------	------	---------

---

### ENSEMBLE - ROCK BAND

|Four or more participates. |Any combination of instruments.

G-8090	Junior - 12 yrs & under	\$20.00
G-8091	Senior - 18 yrs & under	\$20.00

---

### MASTER CLASS

- Open class.
- "Own Choice" of one piece.
- The selection being performed may be a new work being prepared for competition, examinations, or auditions in the future, repertoire performed in previous years that has been perfected, repertoire that has been performed in the current Festival year, etc.
- Presentation of music will be followed by the suggestions and ideas of the Adjudicator.
- Personal invitation by Adjudicator may be issued.

G-8187	Grades 5-8 Solo	\$10.00
G-8188	Grades 9-ARCT	\$10.00
G-8189	Ensemble	\$20.00

# Midland Music Festival - Syllabus 2011

## VIOLIN/FIDDLES

School participants must be registered with the school and observe age guidelines.

If entering more than one class, different music pieces must be performed in each class. All classes are "Own Choice" unless otherwise indicated. Provide original music to the Adjudicator.

Students must provide own accompanist.

Inquiries: Please call the Festival Violin/Fiddles Syllabus advisor, Cindy Thompson at 549-4236

### STRING SOLO-GRADED (violin, viola, cello, bass)

- Participants under private tutelage may enter classes in this section at their present level of study or above
- For privately tutored students who do not participate in conservatory exams, the student may enter a grade determined by their teacher
- Music must be from RCM/CC syllabi

S-7000	Beginner	\$10.00
S-7001	Pre-grade 1/Grade 1	\$10.00
S-7002	Grade 2	\$10.00
S-7003	Grade 3	\$10.00
S-7004	Grade 4	\$10.00
S-7005	Grade 5	\$10.00
S-7006	Grade 6	\$10.00
S-7007	Grade 7	\$10.00
S-7008	Grade 8	\$10.00
S-7009	Grade 9	\$10.00
S-7010	Grade 10	\$10.00
S-7011	Associate	\$10.00

### STRING SOLO-GENERAL (violin, viola, cello, bass)

- Own choice - does NOT need to be from RCM/CC syllabi
- Music must not have been performed in any other class

S-7012	8 yrs & under	\$10.00
S-7013	10 yrs & under	\$10.00
S-7014	12 yrs & under	\$10.00
S-7015	14 yrs & under	\$10.00
S-7016	16 yrs & under	\$10.00
S-7017	18 yrs & under	\$10.00
S-7018	Open	\$10.00

### STRING DUET (violin, viola, cello, bass)

- Own choice - memory not required

S-7019	8 yrs & under	\$15.00
S-7020	10 yrs & under	\$15.00
S-7021	12 yrs & under	\$15.00
S-7022	14 yrs & under	\$15.00
S-7023	16 yrs & under	\$15.00
S-7024	18 yrs & under	\$15.00

### STRING DUET (violin, viola, cello, bass)

- Own choice - memory not required

S-7025	Open	\$15.00
--------	------	---------

### STRING TRIO (violin, viola, cello, bass)

- Own choice - memory not required

S-7026	8 years & under	\$20.00
S-7027	10 years & under	\$20.00
S-7028	12 years & under	\$20.00
S-7030	14 years & under	\$20.00
S-7031	16 years & under	\$20.00
S-7032	18 years & under	\$20.00
S-7033	Open	\$20.00

### STRING QUARTETTE, QUINTETTE OR SEXTETTE

(violin, viola, cello, bass)

- Own choice - memory not required

S-7034	8 years & under	\$20.00
S-7035	10 years & under	\$20.00
S-7036	12 years & under	\$20.00
S-7037	14 years & under	\$20.00
S-7038	16 years & under	\$20.00
S-7039	18 years & under	\$20.00
S-7040	Open	\$20.00

### HARP SOLO-GENERAL

- Own choice - does NOT need to be from RCM/CC syllabi
- Music must not have been performed in any other class

S-7041	Beginner-1st year of study	\$10.00
S-7042	Intermediate-2nd or 3rd year of study	\$10.00
S-7043	Junior-4th or 5th year of study	\$10.00
S-7044	Senior-6th year of study or higher	\$10.00

### FIDDLE SOLO - GENERAL

- Own Choice - does NOT need to be from RCM/CC syllabi
- Music must not have been performed in any other class

S-7060	8 yrs and under	\$10.00
S-7061	10 yrs and under	\$10.00
S-7062	12 yrs and under	\$10.00
S-7063	14 yrs and under	\$10.00
S-7064	16 yrs and under	\$10.00
S-7065	18 yrs and under	\$10.00
S-7066	Open	\$10.00

# Midland Music Festival - Syllabus 2011

## VIOLIN/FIDDLES

---

### FIDDLE DUET

- Own Choice - memory not required

S-7053	8 yrs and under	\$15.00
S-7054	10 yrs and under	\$15.00
S-7055	12 yrs and under	\$15.00
S-7056	14 yrs and under	\$15.00
S-7057	16 yrs and under	\$15.00
S-7058	18 yrs and under	\$15.00
S-7059	Open	\$15.00

---

### FIDDLE TRIO/QUARTETTE

- Own Choice - memory not required

S-7045	8 yrs and under	\$20.00
S-7046	10 yrs and under	\$20.00
S-7047	12 yrs and under	\$20.00
S-7048	14 yrs and under	\$20.00
S-7050	16 yrs and under	\$20.00
S-7051	18 yrs and under	\$20.00
S-7052	Open	\$20.00